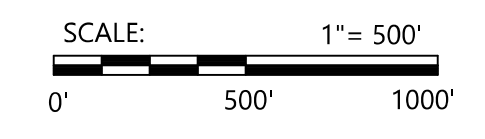


TOWN OF
PALMYRA
SOMERSET
COUNTY
STATE OF MAINE
TAX MAPS
FEBRUARY 2021



FOR TAX ASSESSMENT PURPOSES ONLY.
NOT TO BE USED FOR CONVEYANCES OR
PROPERTY LINE DETERMINATIONS.
DISTANCES SHOWN WERE COPIED
FROM PREVIOUS TAX MAPS AND
HAVE NOT BEEN VERIFIED.

REVISION HISTORY	

Compiled by:
WEBBER SURVEYING Inc.
220 DOVER ROAD, CHARLESTON, MAINE 04422 TEL: 285-7400

MAP NUMBER:
4